

Capped Pro Collection Decking



E V O D E K[®]
ETERNAL HOPE · FLOWING GRAIN



Item	CPD-01
Sectional View	
Size	138*23mm
Lengths	2.2m 2.7m 3.6m or customized
Surface	Ultra Grain + Brush
Ingredients	50% Wood Fiber, 38% HDPE, 12% Additives



Weather Resistance
High resistance to moisture, termite, mildew...



DIY
Anti-slippery, no crack & splinter, low heat-conductive



Barefoot Friendly
Hidden-connector design, safe, beautiful, easy-install, low material & labor cost



Low-maintenance
Easy to clean, no regular painting required



Eco-friendly
Environment-friendly, 100% recyclable



Certificated
BAL29, CE, FSC, ISO...



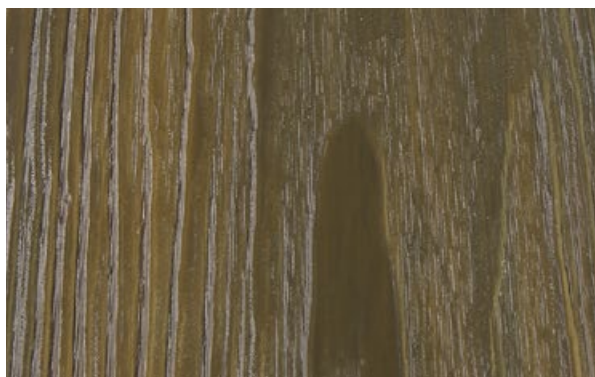
Ultra Natural Wood Grain

- ◆ Proprietary 3D Graining Tech:
A Stereo-Visual Effect, and A Natural Wood Touch;
- ◆ Proprietary Double-Tone Art Color Tech:
A Stunningly Natural Wood Looking



Ultra Strong Core

- ◆ Selected Formula:
A Selected Comprehensive Performance
- ◆ Dual-Screw Extrusion Tech: A Better Materials Diffusion
& Particals Interlock Denser & Stronger



Capped Pro Surface Protection

- Better Resistance to Scratch & Fade
- Better Nail-Holding



Solid Structure

- Extrordinary Structural Stability;
- Extrordinary Life-Span



Double Surface, Double Option

- Ultra Grain: More Aesthetic
- Brush: Enhanced Slip-Resistance

DECKING

EVOLUTION SURFACE

/ ETERNAL HOPE · FLOWING GRAIN

4



EVOLUTION SURFACE



EVOLUTION COLORS



Smoke Gray



Stone Gray



OAK



Dark Teak



Walnut



Ivory White



Space Gray



Amber Yellow



Maple



Teak



IPE



Black

APPLICATION



APPLICATION

INSTALLATION INSTRUCTIONS



Chainsaw



Electric Drill



Electric Screwdriver



Tape Measure



Level



EA-02



EA-03



EA-05



EA-06



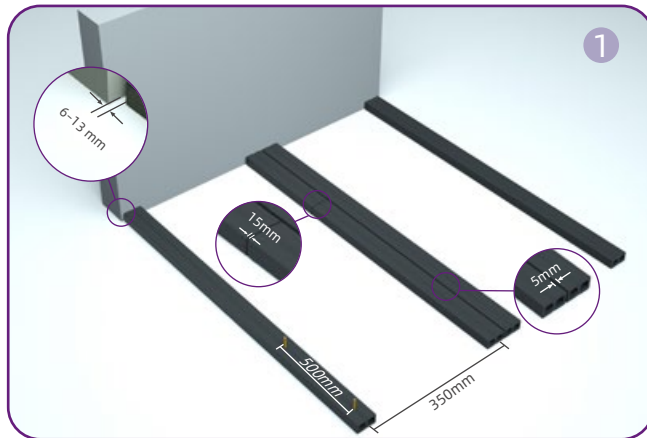
EA-10



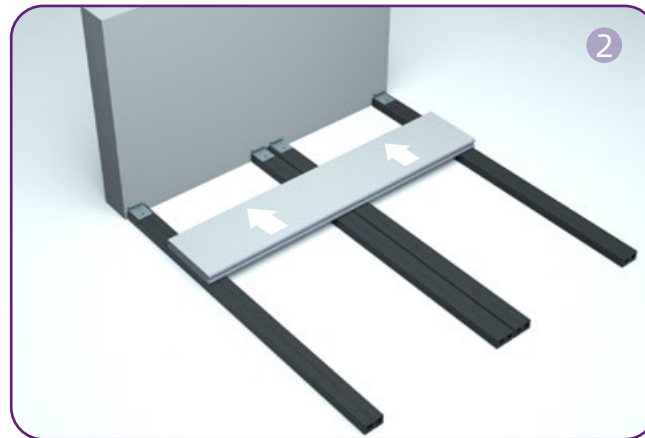
EA-11



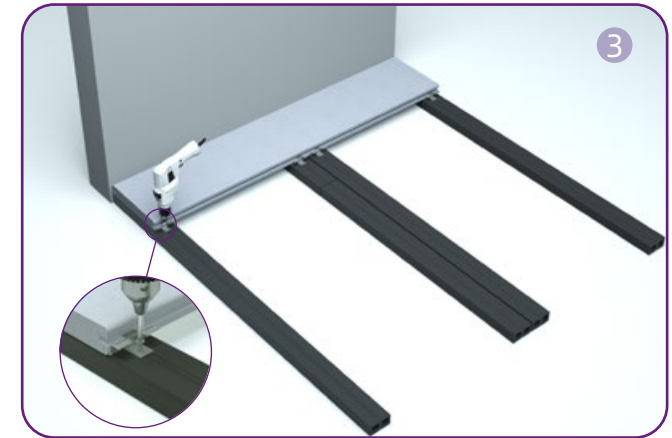
EA-12



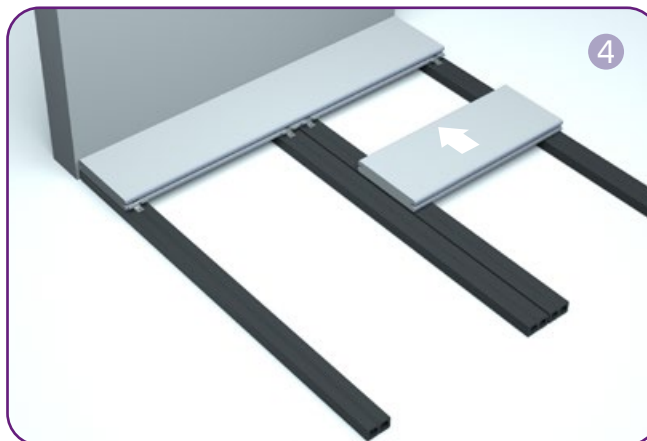
Fix the joists to the ground with expansion screws, the joist spacing should not exceed 350 mm. Double joists are needed at the end-to-end joint between decking boards.



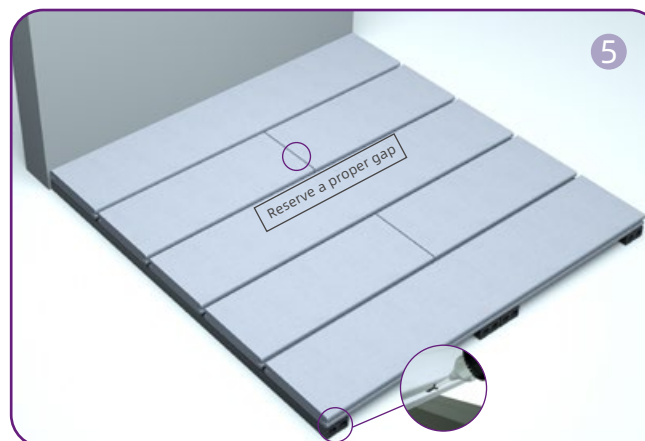
Install the start clip and slide the first decking board into the start clip.



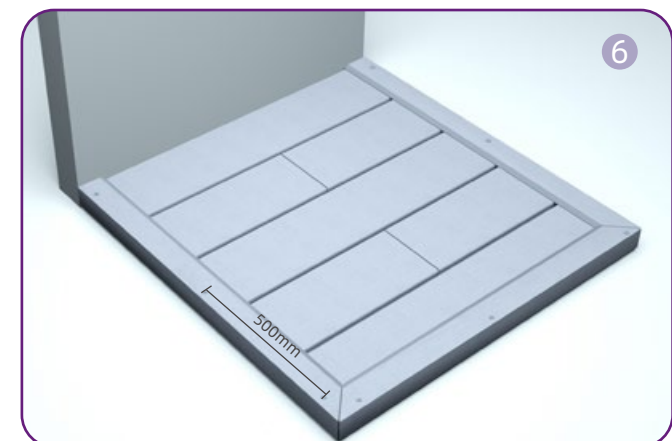
Slide the clips into the groove of the decking boards, secure the clip with screws.



Push the next board into the clips.



Reserve a proper gap at the butt of the two boards for contraction and expansion. Along the edge, toenail screw to secure the decking boards.



Trim the L corner at a suitable angle and fix with screw. The spacing of the screws should be no more than 500mm.

EVODEK

- EVODEK® is a globally trusted brand in the innovation of wood plastic composites, striving to make you enjoy the indoor and outdoor living space.
- EVODEK® is committed to leading the WPC industry with patented extrusion technology, engineering exquisite wood plastic composite product and service, and making EVODEK® WPC an essential part of life for all.
- EVODEK® is committed to protecting the environment by manufacturing wood plastic composite made from recycled wood and plastic.
- Not only a material supplier, EVODEK® designs and produce wood plastic composite, tailoring to the special needs of the client, or meeting the harsh environment, with a well-equipped R&D facility and a professional design team.
- EVODEK® is looking for the dealers and partners from countries or regions, and is committed to the success of our partners first, and keep improving upon our customer support.



ETERNAL HOPE · FLOWING GRAIN

— www.evodekco.com —